

RI 4182 LAN 1 Gbps feedthru filter

Panel mountable LAN 1 Gbps feedthru filter with 50 dB filter suppression from 500 MHz to 26.5 GHz

Features:

- LAN 1 Gbps compatible
- 50 dB filter suppression at 0.5 - 26.5 GHz
- Panel mountable

Overview

The Ranatec RI 4182 is a high performance feedthru filter for all types of applications where LAN signals need to be fed thru a shielded wall.

Application

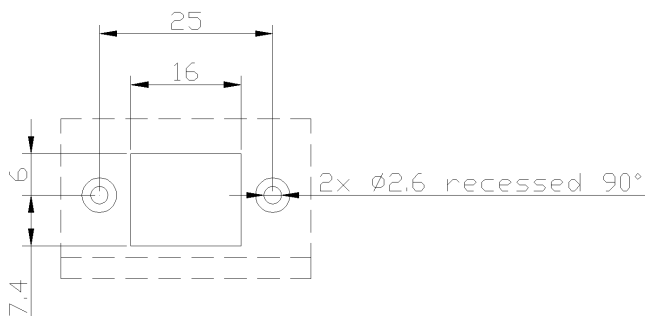
It is primarily designed to fit into Ranatec's RI 180 series shield boxes, but can be delivered separately.

Electrical interfaces

The physical connectors are located at each end of RI 4182. The filter is reciprocal which means the mounting direction can be either way.

Mechanical interface

RI 4182 is prepared for panel mounting with two threaded M2.5 screwholes on the front. It is delivered with an EMC shielding gasket for simple and reliable mounting.



Recommended panel cut-out
Dimensions in mm.

Ranatec RI 4182 panel drawing

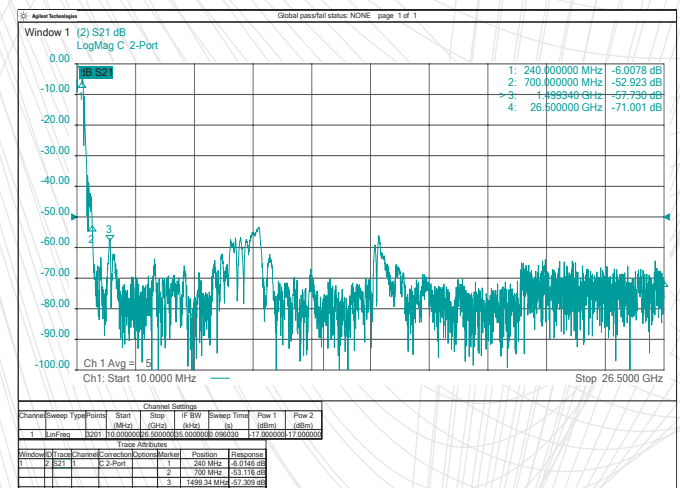


Ranatec RI 4182 is a LAN 1 Gbps panel mountable feedthru filter with very good filter suppression performance over all mobile frequency bands.

Specifications

- Attenuation 0.5 - 26.5 GHz >50 dB typical
- Connector front RJ45 jack
- Connector back RJ45 jack
- Material Aluminium
- Dimensions (WxDxH) 36x71x22 mm
- Weight (standard config) 90 g

Filter suppression at 0.5 - 26.5 GHz



Ranatec RI 4182 typical filter suppression

Ordering
RI 4182

LAN 1 Gbps feedthru filter